



## 2022 - 2023 SERIES

NOMO GROUP CO.,LIMITED

PRODUCTS / TECHNOLOGIES / APPLICATIONS

### NOMO GROUP CO.,LIMITED

+86-0755-29021186    sales@led321.com

+86-186 8838 4867    www.solar-ledlights.com

3rd Floor Building 1, Xinlianhe Industrial Estate  
Shajing, Baoan District, Shenzhen, China 518125





# CONTENTS

---

**01** COMPANY PROFILE

---

**02** CERTIFICATES

---

**03** SOLAR LIGHT

- 01-02 Smart Solar Pole
- 03-04 Hyperion New Series
- 05-06 Helios Series
- 07-08 Eos Series
- 09-10 Irobot Series
- 11-12 Apollo Series
- 13-14 Astro Series
- 15-16 Pallas Quad
- 17-18 Hyperion Series
- 19-20 Selene
- 21-22 Square Helios
- 23-24 Mini Helios
- 25-26 Solar Elf
- 27-28 LED Solar Lighting Tower

---

**04** SOLAR SYSTEM

- 29-30 Portable Solar Energy System
- 31-32 Solar Off Grid Home System
- 33-34 Portable Inverter System
- 35-36 Solar Energy Storage System

# COMPANY PROFILE

NOMO Group is a multinational solar lighting and energy company, founded on April 4, 2010 by Mr. Wanjun Wang.

We pride ourselves on building quality products to meet all standards and extreme environments globally. We cooperate closely with our customers to make the exact product that meets their customer's needs and their environmental requirements.

With our strong team of highly qualified engineers and sales support, We have successfully won government tenders in Europe, Asia and Africa. We have also obtained many international and domestic patents including the patent for the robotics and design of the self-cleaning solar streetlight.

Enquiries from All Over the World are Sincerely welcomed. NOMO GROUP and Team will always be attentive and Co-operate Effortlessly to Build a Brighter Future together.



# PATENT INTRODUCTION

As of January 1st, 2021 NOMO Group has 37 utility model patents, 16 design patents and 16 software copyrights. NOMO also has hundreds of domestic and international certifications and inspections including ISO, CE, CB, ETL, UL, CUL, CCC, ROHS and more.



# SMART SOLAR POLE

## Emergency Info Release

Road Surface Monitoring  
Bridge Detection

## Safety Card Help Call

## Micro Base Station

Wi-Fi

RFID

## Environmental Monitoring

PM2.5/ Wind/ Temperature/ Humidity/ Noise

## Charging Pile

## Intrusion Detection

### Info Display:

- No Parking.
- Setting up a stall is strictly prohibited.

## Emergency Monitoring

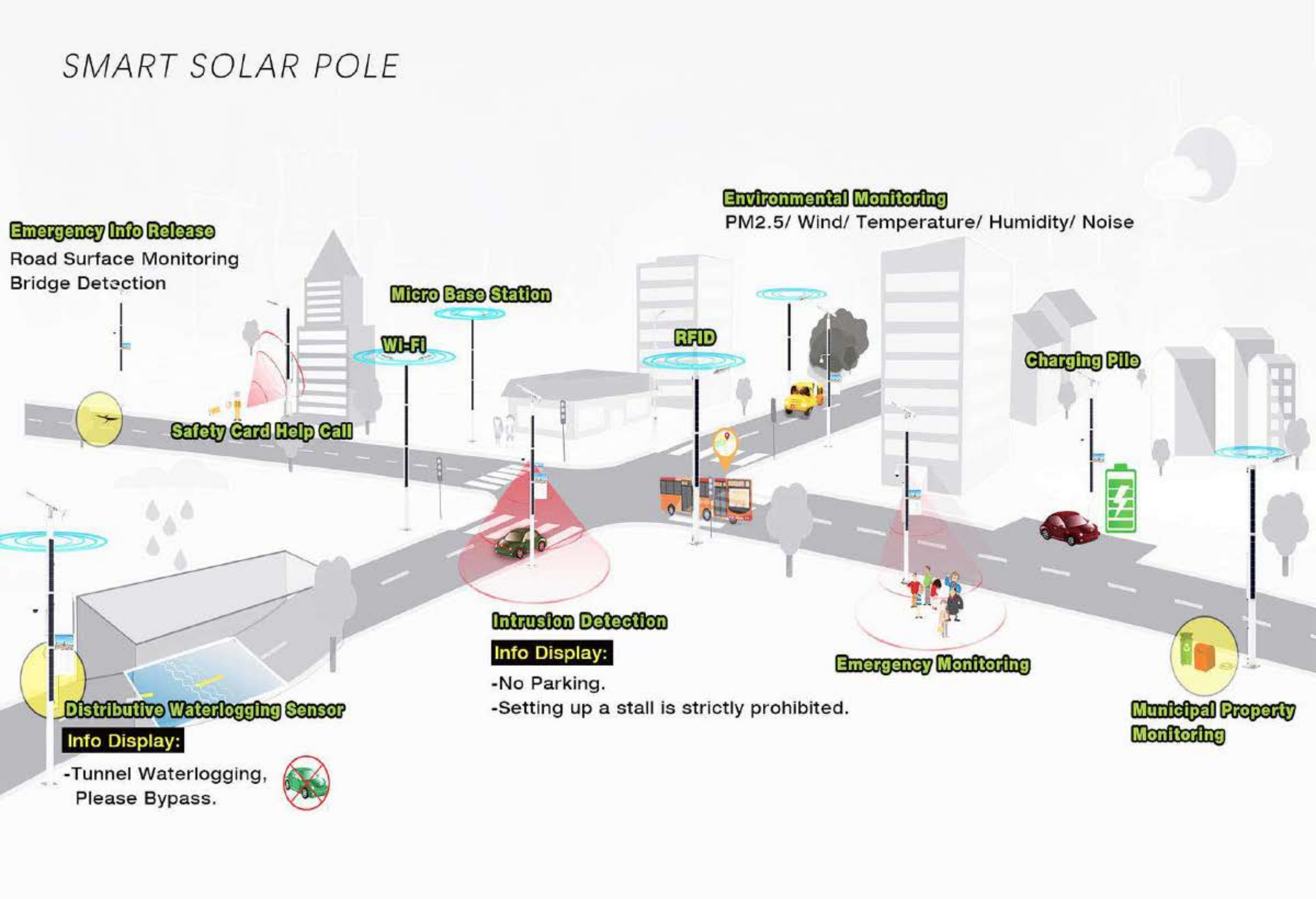
## Distributive Waterlogging Sensor

### Info Display:

- Tunnel Waterlogging,  
Please Bypass.



## Municipal Property Monitoring





# SMART SOLAR POLE

## Intelligent Lighting

- Task planning
- Early warning
- Remote control and adjust brightness
- Single lamp control and group control
- Google map
- Real time checking the work status of solar panel, Battery, LEDG, Light temperature
- AI cloud task

## SOS Button

- Push-to-talk
- Active call

## 5G Ready

- 5G Micro Base Station
- WIFI Hotspot
- IOT Gateway

## IOV

- Vehicle to everything
- Infrity Running

## Release Information

- Environment information
- Real-time Traffic
- Early-warning Information
- Customized Information Release



## Video Surveillance

- Vehicle Monitoring
- Face Recognition
- Analysis of Traffic Flow and Passenger Flow
- Group Abnormal Event Monitoring

## Public Broadcasting

- Regular Broadcast
- Emergency Broadcast

## Touching Screen

- Information Release
- Information Query
- Application Integration

## Smart Charging Pile

- EV Car
- Electric Bicycle, Mobile Phone, etc.

## Environment & Meteorology

- Temperature and Humidity
- Fire Alarm, Noise
- PM2.5, PM10
- Poisonous Gas

- Original Design
- ODM and OEM (Creations welcomed)
- Intelligent Customized Software



| Model NO.        | Light Output(Typ) | Max Power | Installation Height | Installation Distance | Net Weight |
|------------------|-------------------|-----------|---------------------|-----------------------|------------|
| Smart solar pole | 10000LM           | 160W      | 6M                  | 18M-20M               | 126KG      |

# *INTEGRATED SOLAR STREET LIGHT*





# NEW HYPERION

- Modular design,SKD shipping available
- Buckle design,Easy-to-install, Tools-free maintenance
- New generation of solar cell,60% increase in efficiency



| Model NO. | Light Output(Typ) | Max Power | Installation Height | Installation Distance | Net Weight |
|-----------|-------------------|-----------|---------------------|-----------------------|------------|
| NHP-3000  | 5000LM            | 40W       | 3M-6M               | 18M-24M               | 19.2KG     |
| NHP-5000  | 10000LM           | 50W       | 6M-8M               | 22M-30M               | 20.2KG     |
| NHP-8000  | 12000LM           | 80W       | 8M-10M              | 30M-36M               | 25.6KG     |
| NHP-10000 | 20000LM           | 125W      | 10M-12M             | 38M-45M               | 31.5KG     |

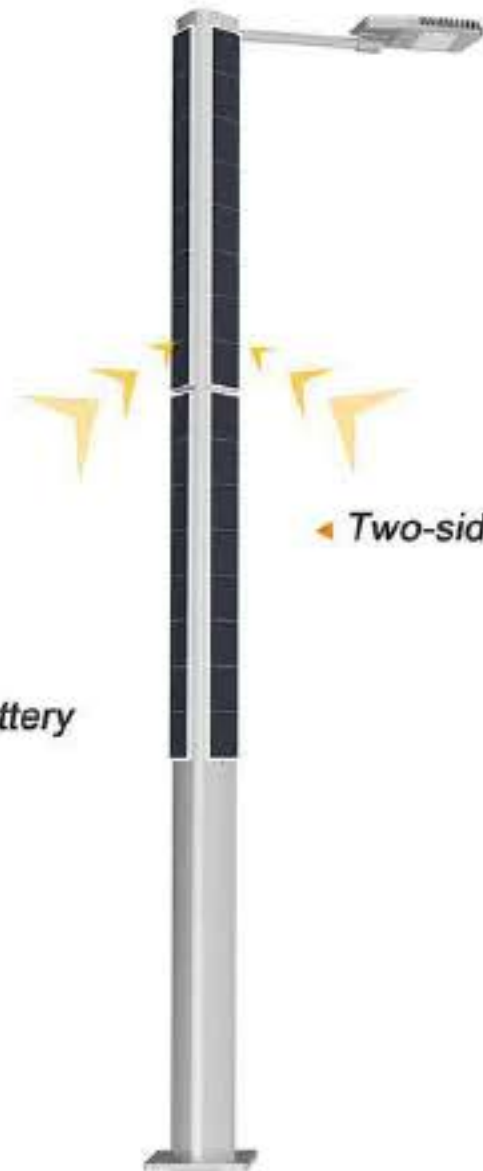


*STAND-ALONE SOLAR POLE LIGHT*





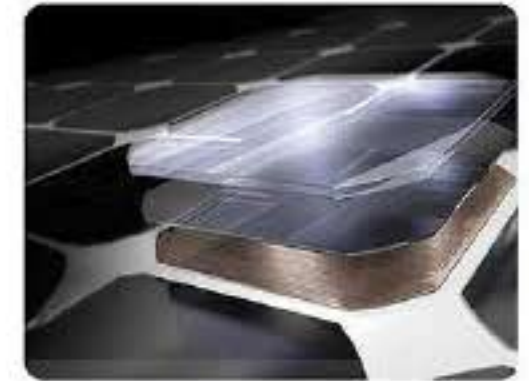
◀ Built in pole battery



◀ Two-sided solar panel

# HELIOS

- Vertical PV system, No dirt and dust
- Modular design, Quick and Easy Installation
- Triangular shapes can withstand high wind speeds



| Model NO. | Light Output(Typ) | Max Power | Installation Height | Installation Distance | Net Weight |
|-----------|-------------------|-----------|---------------------|-----------------------|------------|
| H5        | 10000LM           | 80W       | 5M                  | 18M-20M               | 93.1KG     |
| H6        | 15000LM           | 100W      | 6M                  | 22M-24M               | 106.6KG    |
| H8        | 18000LM           | 200W      | 8M                  | 30M-32M               | 126.4KG    |
| H10       | 24000LM           | 250W      | 10M                 | 35M-40M               | 151.9KG    |

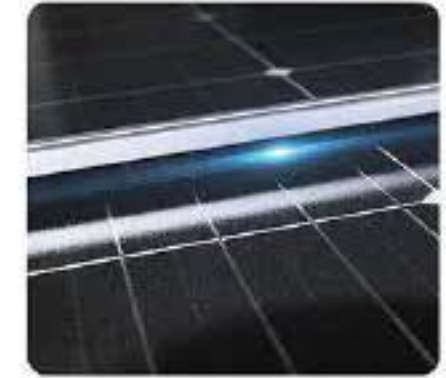
# *ALL-IN-TWO SELF-CLEANING SOLAR STREET LIGHT*





# EOS

- Self cleaning Solar panel (Independent or Multiple)
- Maximum wattage, available in Solar Industry
- Remote or scheduled cleaning from our IOT system



| Model NO. | Light Output(Typ) | Max Power | Installation Height | Installation Distance | Net Weight |
|-----------|-------------------|-----------|---------------------|-----------------------|------------|
| EOS-120W  | 15000LM           | 125W      | 10M-11M             | 38M-42M               | 46.1KG     |
| EOS-160W  | 20000LM           | 160W      | 11M-12M             | 42M-48M               | 51.2KG     |
| EOS-240W  | 30000LM           | 250W      | 12M-13M             | 45M-50M               | 63.2KG     |
| EOS-320W  | 40000LM           | 320W      | 13M-14M             | 50M-55M               | 73.2KG     |

# ALL-IN-ONE SELF-CLEANING SOLAR STREET LIGHT





# IROBOT

- Airports approved
- Nationally and Internationally Patented
- 100,000 units and more deployed Globally



| Model NO. | Light Output(Typ) | Max Power | Installation Height | Installation Distance | Net Weight |
|-----------|-------------------|-----------|---------------------|-----------------------|------------|
| 3000SC    | 6000LM            | 50W       | 6M-9M               | 20M-28M               | 19KG       |
| 5000SC    | 12000LM           | 100W      | 9M-12M              | 28M-36M               | 28KG       |

*ALL-IN-TWO SOLAR STREET LIGHT*





# APOLLO

- OEM+ODM light head
- All direction road installation
- Perfect combination solution to the All-in-One series



| Model NO. | Light Output (Typ) | Max Power | Installation Height | Installation Distance | Net Weight |
|-----------|--------------------|-----------|---------------------|-----------------------|------------|
| AP7000    | 5000-7000LM        | 80W       | 7M-9M               | 25M-36M               | 31KG       |
| AP10000   | 8000-15000LM       | 120W      | 9M-10M              | 32M-40M               | 33.2KG     |
| AP12000   | 10000-25000LM      | 160W      | 10M-12M             | 38M-45M               | 35KG       |



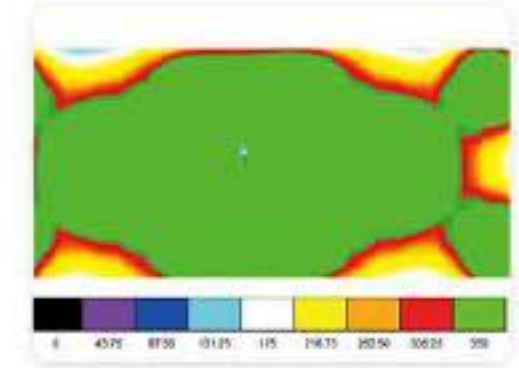
# SOLAR HIGH MAST LIGHT





# ASTRO

- Perfect blanket coverage lighting system
- Wide coverage, customized, no Dark areas
- High mast installation, adjustable to light any landscape



360° Rotation



360° Rotation

| Model NO. | Light Output (Typ) | Max Power | Installation Height | Installation Distance | Net Weight |
|-----------|--------------------|-----------|---------------------|-----------------------|------------|
| AT10000   | 10000LM            | 125W      | 9M-10M              | 32M-40M               | 38.9KG     |
| AT20000   | 20000LM            | 160W      | 10M-12M             | 38M-45M               | 42.5KG     |
| AT30000   | 30000LM            | 250W      | 11M-13M             | 40M-48M               | 59KG       |
| AT40000   | 50000LM            | 320W      | 13M-14M             | 45M-52M               | 62.5KG     |

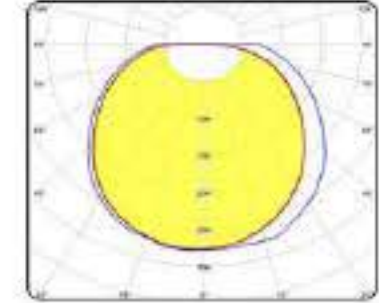
*STAND-ALONE SOLAR GARDEN LIGHT*





# PALLAS QUAD

- 360 degrees attractive surround Lens
- Facts: Absorbs Maximum Sun Power
- Frameless solar panel for dust resistance



| Model NO.   | Light Output(Typ) | Max Power | Installation Height | Installation Distance | Net Weight |
|-------------|-------------------|-----------|---------------------|-----------------------|------------|
| PALLAS QUAD | 4500LM            | 40W       | 6M-7M               | 20M-28M               | 13KG       |

# *ALL-IN-ONE SOLAR STREET LIGHT*





# HYPERION

- Modular design
- Whole lamp heat dissipation
- Adjustable mounting bracket



| Model NO. | Light Output(Typ) | Max Power | Installation Height | Installation Distance | Net Weight |
|-----------|-------------------|-----------|---------------------|-----------------------|------------|
| HP2000    | 3000LM            | 20W       | 4M-6M               | 15M-24M               | 8.4KG      |
| HP3000    | 5000LM            | 40W       | 6M-7M               | 20M-28M               | 14.2KG     |
| HP5000    | 10000LM           | 80W       | 8M-9M               | 30M-36M               | 18KG       |
| HP8000    | 12000LM           | 125W      | 10M-12M             | 38M-45M               | 25KG       |

*SOLAR PATHWAY LIGHT*





# SELENE

- Upon installation, self activates
- Versatile Mounting ( Wall or Pole)
- Professional lens give the best illumination in the industry



Horizontal ▶



Wall-mounted ▶

| Model NO. | Light Output(Typ) | Max Power | Installation Height | Installation Distance | Net Weight |
|-----------|-------------------|-----------|---------------------|-----------------------|------------|
| SELENE    | 1960LM            | 18W       | 4M-5M               | 15M-20M               | 2.5KG      |



# *SOLAR OUTDOOR POLE LIGHT*





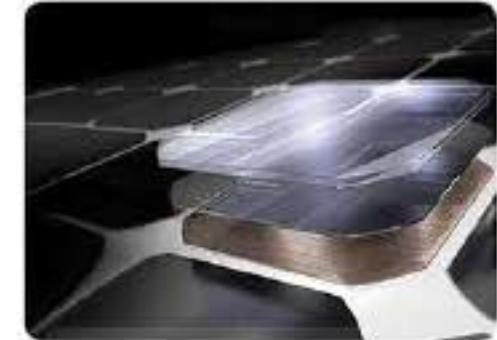
◀ Built in pole battery



◀ Five-sided solar panel

# SQUARE HELIOS

- Battery in pole
- Exclusively designed in China
- Russian / Ukraine projects approved



| Model NO.     | Light Output(Typ) | Max Power | Installation Height | Installation Distance | Net Weight |
|---------------|-------------------|-----------|---------------------|-----------------------|------------|
| Square Helios | 12000LM-15000LM   | 125W      | 6M                  | 22M-24M               | 175KG      |

# SOLAR LAWN LIGHT





# MINI HELIOS

- Surfaced Panels
- 100% Aluminum Pole
- 360° Surround lens (Stylish)
- Up to 100Sq Meter of Brightness



| Model NO.   | Light Output(Typ) | Max Power | Installation Height | Installation Distance | Net Weight |
|-------------|-------------------|-----------|---------------------|-----------------------|------------|
| MINI HELIOS | 2000LM            | 30W       | 1M                  | 15M                   | 14.5KG     |

COMMERCIAL SOLAR LIGHT



# SOLAR ELF

- Independently adjustable solar panel and LED perfect light placement.
- Adjustable mechanisms from zero to 120 degrees.
- Perfect for : Walkways, Bridges, Entrances, Roof edges and Many more.

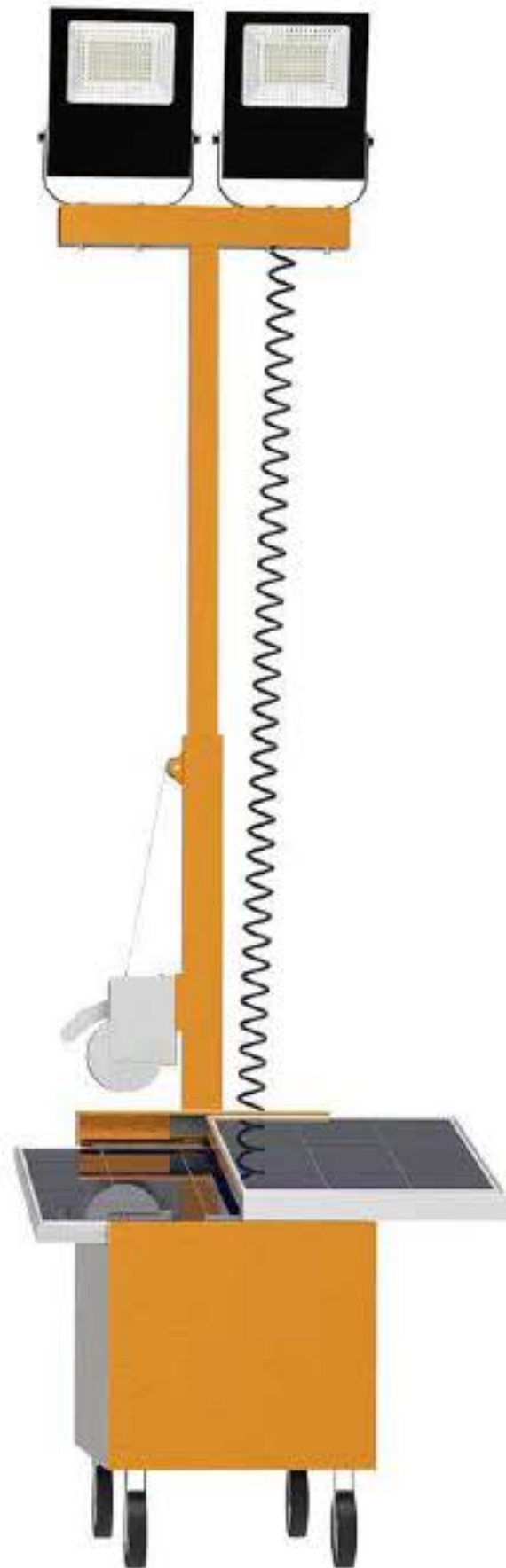


| Model NO.     | Light Output(Typ) | Max Power | Net Weight |
|---------------|-------------------|-----------|------------|
| Solar Elf-5W  | 500LM             | 5W        | 1.2KG      |
| Solar Elf-15W | 1500-2000LM       | 15W       | 2.8KG      |
| Solar Elf-25W | 2000-3000LM       | 25W       | 5KG        |

LED SOLAR LIGHTING TOWER



# LED Solar Lighting Tower



- Free movement
- Emergency use
- Integrated LCD display



Lift Pole



Movable Solar Panel



With Brake

| Model NO.                | Pmax         | 100W Floodlight | Battery Capacity         | Lift Pole           | Material        |
|--------------------------|--------------|-----------------|--------------------------|---------------------|-----------------|
| LED Solar Lighting Tower | 80W*2 (mono) | 2 PCS           | Top level LiFePO4 1100WH | 3-7 meters optional | Stainless steel |



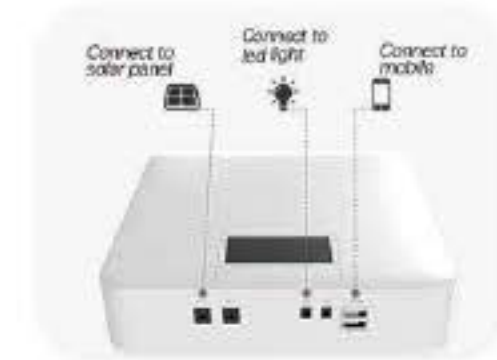
PORTABLE SOLAR ENERGY SYSTEM



# Portable Solar Energy System



- Home Integration
- Built for portability
- Expandable capacity

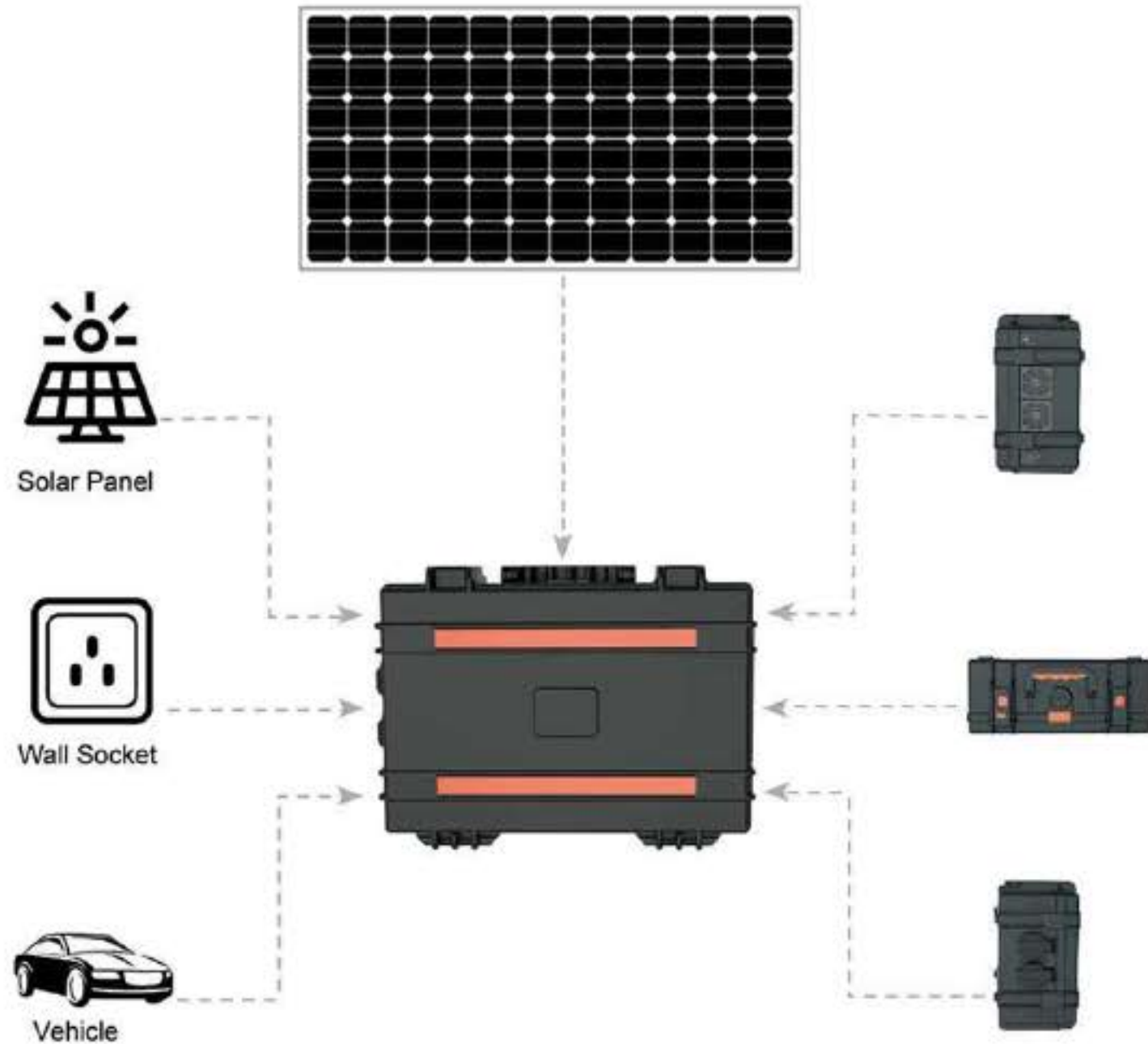


| Model NO. | Battery Capacity | Max Power | LED Bulb      | Net Weight |
|-----------|------------------|-----------|---------------|------------|
| PSES-16W  | 150WH            | 16W       | 2PCS 700LM/PC | 2.8KG      |
| PESE-32W  | 200WH            | 32W       | 4PCS 700LM/PC | 4.8KG      |

*SOLAR ENERGY STORAGE SYSTEM*



# Solar Energy Storage System



- Durable: Use rechargeable battery and high quality solar panels, with lifetime more than 10000h
- Widely applicable to camping, hiking, fishing, expedition, hunting, outdoor activities
- 3 ways charging - by solar energy, car charger or by AC power

| Model NO.                | Battery Capacity | Max Power | AC Output | Charging Methods   |
|--------------------------|------------------|-----------|-----------|--------------------|
| Portable inverter system | 830WH            | 200W      | 1000VA    | PC, AV, Car charge |

# *SOLAR OFF-GRID HOME SYSTEM*



# Solar Off-Grid Home System

- X-Stream Fast Charge
- Uninterrupted home backup
- A battery that lasts for years on end
- Up to 10KW power storage, Connects Parallely



Current Input

Output Current



| Model NO. | Battery Capacity | Max Power | Rated Input Current | DC Output Current |
|-----------|------------------|-----------|---------------------|-------------------|
| PW-160W   | 512WH            | 160W      | 20A                 | 15A               |
| PW-260W   | 768WH            | 260W      | 25A                 | 20A               |
| PW-320W   | 768*2WH          | 320W      | 30A                 | 25A               |

# SOLAR ENERGY STORAGE SYSTEM



# Solar Energy Storage System



- One to power all your devices
- Go green with affordable budget
- Customized solar power solutions



| Rated Voltage | Rated Capacity | Rated Energy | Output Voltage | Output Power |
|---------------|----------------|--------------|----------------|--------------|
| 51.2V         | 300Ah          | 15.6KWH      | 110V/240V      | 3KW/5KW      |